

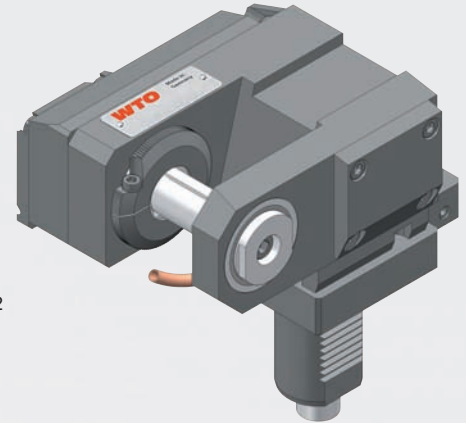
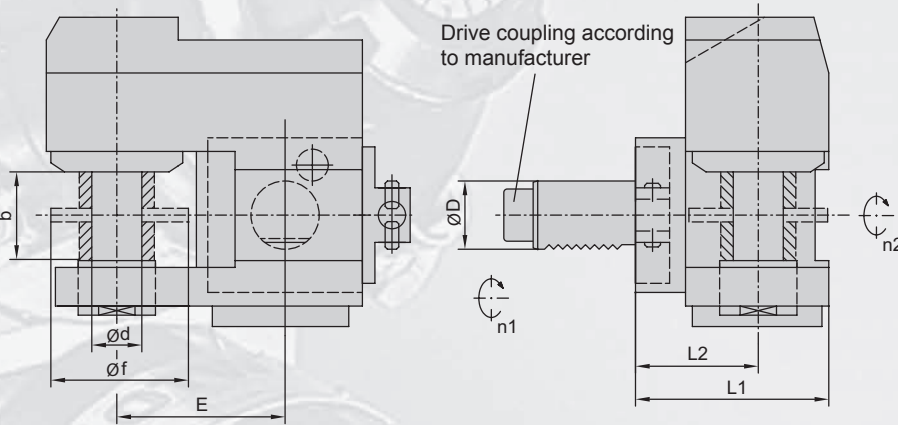
## Offset slitting saw unit - interchangeable milling arbor -

Please select suitable turret specification from the Machine Type listing!

Typ A: Face mounted  
Typ B: O. D. mounted

**Ratio = Torque increase (speed reduction)**  
Do not exceed torque limit specified!

180° reversible head



### 4115... (EC) with external coolant supply

Order milling arbor and wrenches separately!

Item No.	Turret specification				interchangeable milling arbor				Dimensions / Data					Wrench
	ØD	Turret manufacturer	Typ	Drive coupling	Type	Ød	Øf	bf	L1	L2	E	M Nm	Ratio n1:n2	
411500001-20	20	Diplomatic <sup>1)</sup>	A	DIN 1809	8-4	10, 13, 16	63	30	75	55	49	12	1.8:1	...000326
411500002-20	20	Sauter <sup>1)</sup>	A	DIN 5480	8-4	10, 13, 16	63	30	83	63	49	12	1.8:1	...000326
411500003-25	25	Emco 332 <sup>1)</sup>	B	DIN 5480	8-4	10, 13, 16	63	30	91	71	49	12	1:1	...000326
411500005-25	25	Index ABC	B	1-step	14-2	16, 22, 27	80	40	104	72	76	50	2.7:1	...000460
411500002-25	25	Sauter	B	DIN 5480	14-2	16, 22, 27	80	40	104	72	76	50	2.7:1	...000460
411500006-25	25	Traub TNC 42	B	bevel gear	14-2	16, 22	63	40	84	53	62	40	2:1	...000460
on request	30	Baruffaldi	A	TOEM 160										
411500005-30	30	Diplomatic <sup>1)</sup>	A	DIN 1809	8-4	10, 13, 16	63	30	87	67	49	12	1.8:1	...000326
411500012-30	30	Diplomatic	A	DIN 1809	14-2	16, 22, 27	80	40	104	72	76	50	2.7:1	...000460
411500010-30	30	Mori Seiki ZT1000Y	B	DIN 1809	14-2	16, 22, 27	80	40	96	65	76	50	2.7:1	...000460
411500009-30	30	Okuma LB 200-M	A	1-step	14-2	16, 22, 27	80	40	104	72	76	50	2.7:1	...000460
411500011-30	30	Sauter	A	DIN 5480	14-2	16, 22, 27	80	40	104	72	76	50	2.7:1	...000460
411500007-30	30	Sauter	A	DIN 5482	14-2	16, 22, 27	80	40	104	72	76	50	2.7:1	...000460
411500008-30	30	Sauter (L2=85)	B	DIN 5480	14-2	16, 22, 27	80	40	114	82	76	50	2.7:1	...000460
411500002-30	30	Traub TNC 65	B	bevel gear	14-2	16, 22, 27	80	40	94	62	76	50	2.7:1	...000460
on request	40	Baruffaldi	A	TOEM 200										
411500011-40	40	Diplomatic	A	DIN 1809	14-2	16, 22, 27	80	40	102	70	76	50	2.7:1	...000460
411500010-40	40	Emag	B	DIN 1809	14-2	16, 22, 27	80	40	102	70	76	50	2.7:1	...000460
411500004-40	40*	Mazak MP-6100	B	DIN 1809	14-2	16, 22, 27	80	40	144	112	76	50	2.7:1	...000460
411500001-40	40*	Mazak MP-6200	B	DIN 1809	14-2	16, 22, 27	80	40	159	127	76	50	2.7:1	...000460
411500005-40	40*	Mazak SQT-100M(S)	B	DIN 1809	14-2	16, 22, 27	80	40	129	97	76	50	2.7:1	...000460
411500006-40	40	Okuma LB 300-M	A	1-step	14-2	16, 22, 27	80	40	102	70	76	50	2.7:1	...000460
411500007-40	40	Okuma LB 400-M <sup>1)</sup>	A	1-step	19-2	22, 27, 32, 40	125	52	141	99	100	140	3:1	...000259
411500009-40	40	Sauter	A	DIN 5480	14-2	16, 22, 27	80	40	102	70	76	50	2.7:1	...000460
411500008-40	40	Sauter	A	DIN 5482	14-2	16, 22, 27	80	40	102	70	76	50	2.7:1	...000460
on request	50	Baruffaldi	A	TOEM 250										
411500006-50	50	Diplomatic <sup>1)</sup>	A	DIN 1809	19-2	22, 27, 32, 40	125	52	141	99	100	140	3:1	...000259
411500005-50	50	Emag <sup>1)</sup>	B	DIN 1809	19-2	22, 27, 32, 40	125	52	141	99	100	140	3:1	...000259
411500001-50	50	Okuma LB 35II-M <sup>1)</sup>	A	2-step	19-2	22, 27, 32, 40	125	52	141	99	100	140	3:1	...000259
411500002-50	50	Okuma LU 35-M <sup>1)</sup>	A	1-step	19-2	22, 27, 32, 40	125	52	141	99	100	140	3:1	...000259
411500007-50	50	Sauter <sup>1)</sup>	A	DIN 5480	19-2	22, 27, 32, 40	125	52	141	99	100	140	3:1	...000259
411500004-50	50	Sauter <sup>1)</sup>	A	DIN 5482	19-2	22, 27, 32, 40	125	52	141	99	100	140	3:1	...000259
on request	60	Diplomatic	A	DIN 1809										
411500002-60	60	Okuma LU 45-M <sup>1)</sup>	A	1-step	19-2	22, 27, 32, 40	125	52	141	99	100	140	3:1	...000259
411500003-60	60	Sauter <sup>1)</sup>	A	DIN 5482	19-2	22, 27, 32, 40	125	52	141	99	100	140	3:1	...000259

1) direction of rotation: n1 ≠ n2