

Slitting saw unit - interchangeable milling arbor -

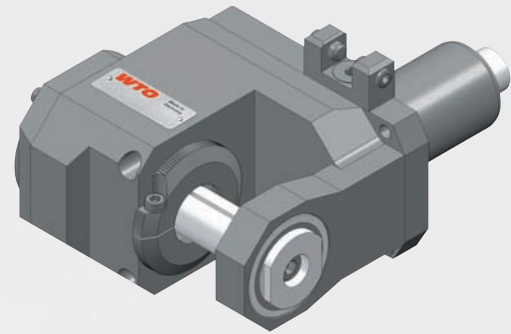
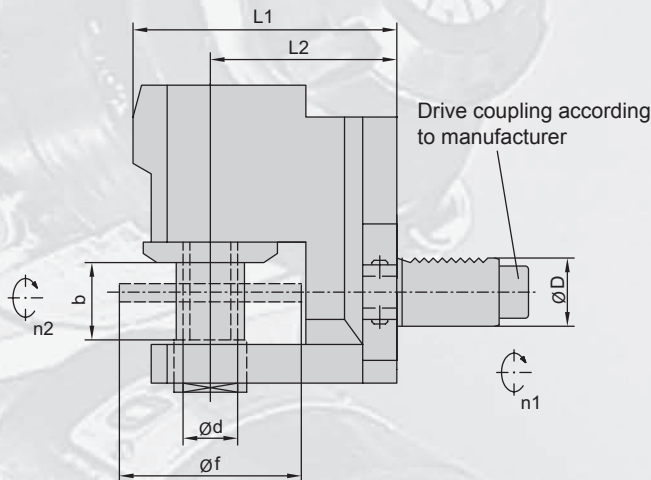
Please select suitable turret specification from the Machine Type listing!

Typ A: Face mounted

Typ B: O. D. mounted

Ratio = Torque increase (speed reduction)

Do not exceed torque limit specified!



4109... (EC) with external coolant supply

Order milling arbor and wrenches separately!

Item No.	Turret specification				interchangeable milling arbor			Dimensions / Data				Wrench	
	ØD	Turret manufacturer	Typ	Drive coupling	Type	Ød	Ød f	b	L1	L2	M Nm		Ratio n1:n2
410900000-25	25	Index G200 ¹⁾	B	1-step	14-2	16, 22, 27	80	34	116	82	40	2.62:1	...000460
410900010-30	30	Emco HT-665	B	DIN 5480	14-2	16, 22, 27	80	34	148	114	40	2.62:1	...000460
410900014-30	30	Index G300	B	1-step	14-2	16, 22, 27	80	34	138	104	40	2.62:1	...000460
410900009-30	30	Okuma LT 200-M	B	1-step	14-2	16, 22, 27	80	34	116	82	40	2.62:1	...000460
410900015-30	30	Sauter (L2=85)	B	DIN 5480	14-2	16, 22, 27	80	34	116	82	40	2.62:1	...000460
410900008-30	30	Sauter (L2=100)	B	DIN 5480	14-2	16, 22, 27	80	34	138	104	40	2.62:1	...000460
410900015-40	40	Emco HT-690	B	DIN 5480	14-2	16, 22, 27	80	34	136	102	40	2.62:1	...000460
410900009-40	40	Index V300	B	1-step	14-2	16, 22, 27	80	34	136	102	40	2.62:1	...000460
410900010-40	40*	Mazak SQT-200M(S)	B	DIN 1809	14-2	16, 22, 27	80	34	160	126	40	2.62:1	...000460
410900016-40	40	Mori Seiki ZT2500Y	B	DIN 1809	14-2	16, 22, 27	80	34	151	117	40	2.62:1	...000460
410900011-40	40	Okuma LT 300-M	B	1-step	14-2	16, 22, 27	80	34	124	90	40	2.62:1	...000460
410900012-40	40	Okuma LT 400-M	B	1-step	14-2	16, 22, 27	80	34	136	102	40	2.62:1	...000460
410900013-40	40	Sauter	B	DIN 5480	14-2	16, 22, 27	80	34	136	102	40	2.62:1	...000460

*no VDI standard

1) only turret 1 and turret Y-B